

Max Pressure: 800kpa

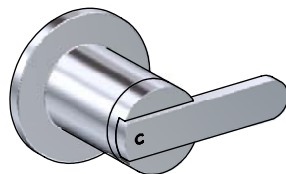
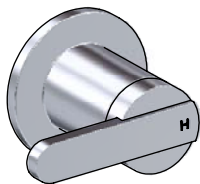
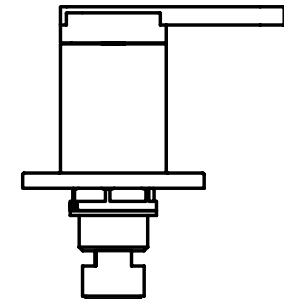
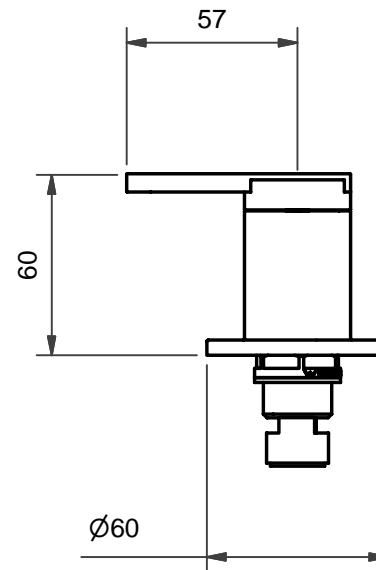
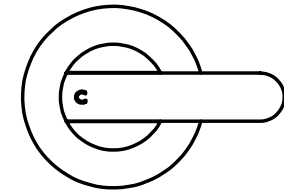
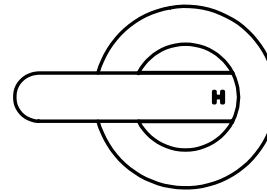
Max Temp: 80°c

Designed to suit in-wall tap set breaching  
assemblies complying to AS 3718.

Optimum set back from finished wall to tap head  
sealing face = 10mm.

Headworks Available:  
Ceramic Disc 1/4 Turn standard

PRICED AND PACKED IN PAIRS



As part of Ramtaps commitment to quality  
products, Ramtaps reserves the right to  
alter the design or specification of it's  
products without notice.

RAMTAPS PTY. LTD.  
556 Curtin Ave. East. Eagle Farm 4009.  
Ph. (07) 3633 6060. Fax (07) 3633 6066.

© 2006 All dimensions in mm.  
This drawing remains the property of Ramtaps  
and should not be copied or distributed without  
Ramtaps consent.

Title:

LUKA WALL TOP ASSEMBLY

Code:

LUKWS

Edition

Date of Issue:

11/5/07